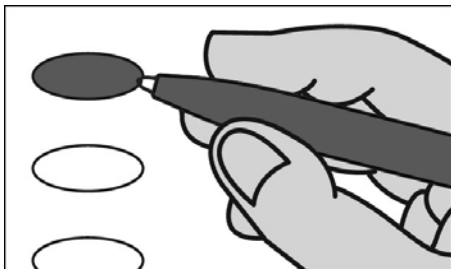


**Official Ballot**  
**Nonpartisan Office and Referendum**  
**April 1, 2025**

S30

**Notice to Voters:** If you are voting on Election Day, your ballot must be initialed by two (2) election inspectors. If you are voting absentee, your ballot must be initialed by the municipal clerk or deputy clerk. Your ballot may not be counted without initials (see end of ballot for initials).

**General Instructions**



If you make a mistake on your ballot or have a question, ask an election inspector for help (absentee voters: Contact your municipal clerk).

To vote for a name on the ballot, fill in the oval next to the name like this: ●

To vote for a name that is not on the ballot, write the name on the line marked "write-in" and fill in the oval next to the name like this: ●

**State Superintendent of Public Instruction**

**State Superintendent**  
**Vote for 1**

- Brittany Kinser
- Jill Underly
- write-in:

**Judicial**

**Justice of the Supreme Court**  
**Vote for 1**

- Brad Schimel
- Susan Crawford
- write-in:

**Court of Appeals Judge**  
**District 4**  
**Vote for 1**

- Jennifer Nashold
- write-in:

**Circuit Court Judge**  
**Branch 1**  
**Vote for 1**

- Karl Hanson
- write-in:

**Circuit Court Judge**  
**Branch 2**  
**Vote for 1**

- Derrick A. Grubb
- write-in:

Continue voting at top of next column.

**Municipal**

**Town of Magnolia**  
**Town Board Chairperson**  
**Vote for 1**

- Kurt Bartlett
- write-in:

**Town of Magnolia**  
**Town Board Supervisor 1**  
**Vote for 1**

- William S. Trow
- write-in:

**Town of Magnolia**  
**Town Board Supervisor 2**  
**Vote for 1**

- Stephen J. Eager
- write-in:

**Town of Magnolia**  
**Town Clerk/Treasurer**  
**Vote for 1**

- Graceann Toberman
- write-in:

**School District**

**School District of Albany**  
**School Board Member**  
**Vote for not more than 3**

- Sherry Gertsch
- Justin Monson
- Amy Hollis
- write-in:
- write-in:
- write-in:

Continue voting at top of next column.

**Referendum**

To vote in favor of the question, fill in the oval next to "Yes," like this: ●

To vote against the question, fill in the oval next to "No," like this: ●

**State**

**Question 1: "Photographic identification for voting.** Shall section 1m of article III of the constitution be created to require that voters present valid photographic identification verifying their identity in order to vote in any election, subject to exceptions which may be established by law?"

- Yes
- No

**Official Ballot**  
Nonpartisan Office and Referendum  
April 1, 2025  
for  
**Town of Magnolia**  
  
**School District of**  
**Albany**

**Ballot issued by**  
\_\_\_\_\_  
\_\_\_\_\_  
Initials of election inspectors

**Absentee ballot issued by**  
\_\_\_\_\_  
Initials of Municipal Clerk or Deputy Clerk  
\_\_\_\_\_  
If issued by SVDs, both must initial.

**Certification of Voter Assistance**  
I certify that I marked or read aloud this ballot at the request and direction of a voter who is authorized under Wis. Stat. §6.82 to receive assistance.  
\_\_\_\_\_  
Signature of assistor

**For Official Use Only**

**Inspectors:** Identify ballots required to be remade:  
 Overvoted  
 Damaged  
 Other

If this is the **Original Ballot**, write the serial number here:  
\_\_\_\_\_

If this is the **Duplicate Ballot**, write the serial number here:  
\_\_\_\_\_

\_\_\_\_\_  
Initials of inspectors who remade ballot