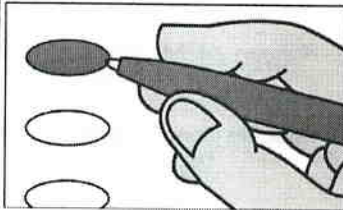


**Official Ballot**  
**Presidential Preference Vote**  
**Nonpartisan Office and Referendum**  
**April 2, 2024**

S45

**Notice to Voters:** If you are voting on Election Day, your ballot must be initialed by two (2) election inspectors. If you are voting absentee, your ballot must be initialed by the municipal clerk or deputy clerk. Your ballot may not be counted without initials (see end of ballot for initials).

**General Instructions**



If you make a mistake on your ballot or have a question, ask an election inspector for help (absentee voters: Contact your municipal clerk).

To vote for a name on the ballot, fill in the oval next to the name like this: ●

To vote for a name that is not on the ballot, write the name on the line marked "write-in" and fill in the oval next to the name like this: ●

**Presidential Preference Vote**

**In the Presidential Preference Vote:**

- You may vote for only ONE candidate.
- You may vote in only ONE party.
- If you choose a party, votes cast in that party will be counted. Votes cast in any other party will not be counted.
- If you do not choose a party, and you vote in more than one party, no votes will be counted.

**Special Instructions for Presidential Preference Vote**

**Choose the party in which you will vote.** Within the party you have chosen, you will have ONE of three choices:

1. Vote for a candidate whose name is printed on this ballot in the party you have chosen.
2. Vote for an instructed delegation from Wisconsin to the national convention of the party you have chosen.
3. Write in the name of another person to become the presidential candidate of the party you have chosen.

**Fill in ONE oval in ONE party.**

Presidential Preference Vote begins at top of next column.

**Presidential Preference Vote**

**Choose a party in which to vote**  
 Fill in the oval next to your party of choice, like this: ● Choose only ONE

- Democratic
- Republican

**Democratic Party Primary**

*If you vote in this party's primary, you may not vote in any other party's primary.*

**President of the United States Vote for 1**

- Joe Biden
- Dean Phillips
- Uninstructed Delegation
- write-in

**STOP** End Democratic Party Primary

**Republican Party Primary**

*If you vote in this party's primary, you may not vote in any other party's primary.*

**President of the United States Vote for 1**

- Chris Christie
- Vivek Ramaswamy
- Ron DeSantis
- Nikki Haley
- Donald Trump
- Uninstructed Delegation
- write-in

**STOP** End Republican Party Primary

**STOP** End Presidential Preference Vote

**Nonpartisan offices begin here.**

**Judicial**

**Court of Appeals Judge District 4 Vote for 1**

- JoAnne Kloppenburg
- write-in

**Circuit Court Judge Branch 3 Vote for 1**

- Jeffrey S. Kuglitsch
- write-in

**Circuit Court Judge Branch 7 Vote for 1**

- Barbara W. McCrory
- write-in

Continue voting at top of next column.

**County**

**County Supervisor District 10 Vote for 1**

- Brian Knudson
- Dennis Wendt
- write-in

**School District**

**Evansville Community School District School Board Member Vote for not more than 3**

- Crystal Alling
- Melissa Hammann
- Keith Hennig
- Seth Schulz
- Elliot Samuel-Lamm
- write-in
- write-in
- write-in

**Referendum**

To vote in favor of the question, fill in the oval next to "Yes," like this: ●

To vote against the question, fill in the oval next to "No," like this: ●

**State**

**QUESTION 1: "Use of private funds in election administration.** Shall section 7 (1) of article III of the constitution be created to provide that private donations and grants may not be applied for, accepted, expended, or used in connection with the conduct of any primary, election, or referendum?"

- Yes
- No

Continue voting on back of ballot.

**Referendum**

To vote in favor of a question, fill in the oval next to "Yes," like this: ●

To vote against a question, fill in the oval next to "No," like this: ●

**State**

**QUESTION 2: "Election officials.** Shall section 7 (2) of article III of the constitution be created to provide that only election officials designated by law may perform tasks in the conduct of primaries, elections, and referendums?"

Yes

No

**Evansville Community School District**

**QUESTION:** Shall the Evansville Community School District, Rock, Green and Dane Counties, Wisconsin be authorized to exceed the revenue limit specified in Section 121.91, Wisconsin Statutes, by \$2,700,000 for the 2024-2025 school year, by \$3,900,000 for the 2025-2026 school year, by \$4,600,000 for the 2026-2027 school year, by \$5,200,000 for the 2027-2028 school year, and by \$5,900,000 for the 2028-2029 school year, for non-recurring purposes consisting of operational and maintenance expenses, including to maintain current class sizes, to provide student resources, to maintain educational programming, salaries, and benefits, and to address facility maintenance?

Yes

No

**Official Ballot**

**Presidential Preference Vote  
Nonpartisan Office and Referendum**

April 2, 2024

for

**Town of Magnolia**

Evansville Community School District

**Ballot issued by**

\_\_\_\_\_  
Initials of election inspectors

**Absentee ballot issued by**

\_\_\_\_\_  
Initials of Municipal Clerk or Deputy Clerk  
If issued by SVDs, both must initial.

**Certification of Voter Assistance**

I certify that I marked or read aloud this ballot at the request and direction of a voter who is authorized under Wis. Stat. §6.82 to receive assistance.

\_\_\_\_\_  
Signature of assistor

**For Official Use Only**

**Inspectors:** Identify ballots required to be remade:

- Overvoted
- Damaged
- Other

If this is the **Original Ballot**, write the serial number here:

\_\_\_\_\_

If this is the **Duplicate Ballot**, write the serial number here:

\_\_\_\_\_

\_\_\_\_\_  
Initials of inspectors who remade ballot