

Official Primary Ballot

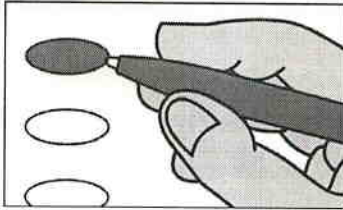
Nonpartisan Office

February 16, 2021

S1

Notice to Voters: If you are voting on Election Day, your ballot must be initialed by two (2) election inspectors. If you are voting absentee, your ballot must be initialed by the municipal clerk or deputy clerk. Your ballot may not be counted without initials. (See right column of ballot for initials.)

General Instructions



If you make a mistake on your ballot or have a question, ask an election inspector for help. (Absentee voters: Contact your municipal clerk.)

To vote for a name on the ballot, fill in the oval next to the name like this: ●

To vote for a name that is not on the ballot, write the name on the line marked "write-in" and fill in the oval next to the name like this: ●

State Superintendent of Public Instruction

State Superintendent Vote for 1

- Jill Underly
- Deborah Kerr
- Steve Krull
- Shandowlyon Shawn Hendricks-Williams
- Troy Gunderson
- Joe Fenrick
- Sheila Briggs
- write-in

Official Primary Ballot Nonpartisan Office February 16, 2021

for

- Town of Avon
- Town of Beloit
- Town of Bradford
- Town of Center
- Town of Clinton
- Town of Fulton
- Town of Harmony
- Town of Janesville
- Town of Johnstown
- Town of LaPrairie
- Town of Lima
- Town of Magnolia
- Town of Milton
- Town of Newark
- Town of Plymouth
- Town of Porter
- Town of Rock
- Town of Spring Valley
- Town of Turtle
- Town of Union
- Village of Clinton
- Village of Footville
- Village of Orfordville
- City of Beloit Ward 1
- City of Brodhead
- City of Edgerton Wards 1-6
- City of Evansville
- City of Janesville Ward 1
- City of Milton

Ballot issued by

 Initials of election inspectors

Absentee ballot issued by

 Initials of Municipal Clerk or Deputy Clerk

If issued by SVDs, both SVDs must initial.

Certification of Voter Assistance

I certify that I marked or read aloud this ballot at the request and direction of a voter who is authorized under Wis. Stat. §6.82 to receive assistance.

 Signature of assistor

For Official Use Only

Inspectors: Identify ballots required to be remade:

- Overvoted
- Damaged
- Other

If this is the **Original Ballot**, write serial number here:

If this is the **Duplicate Ballot**, write serial number here:

 Initials of inspectors who remade ballot

SAMPLE